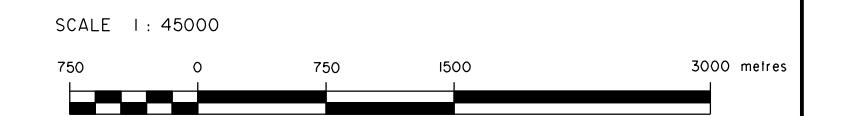
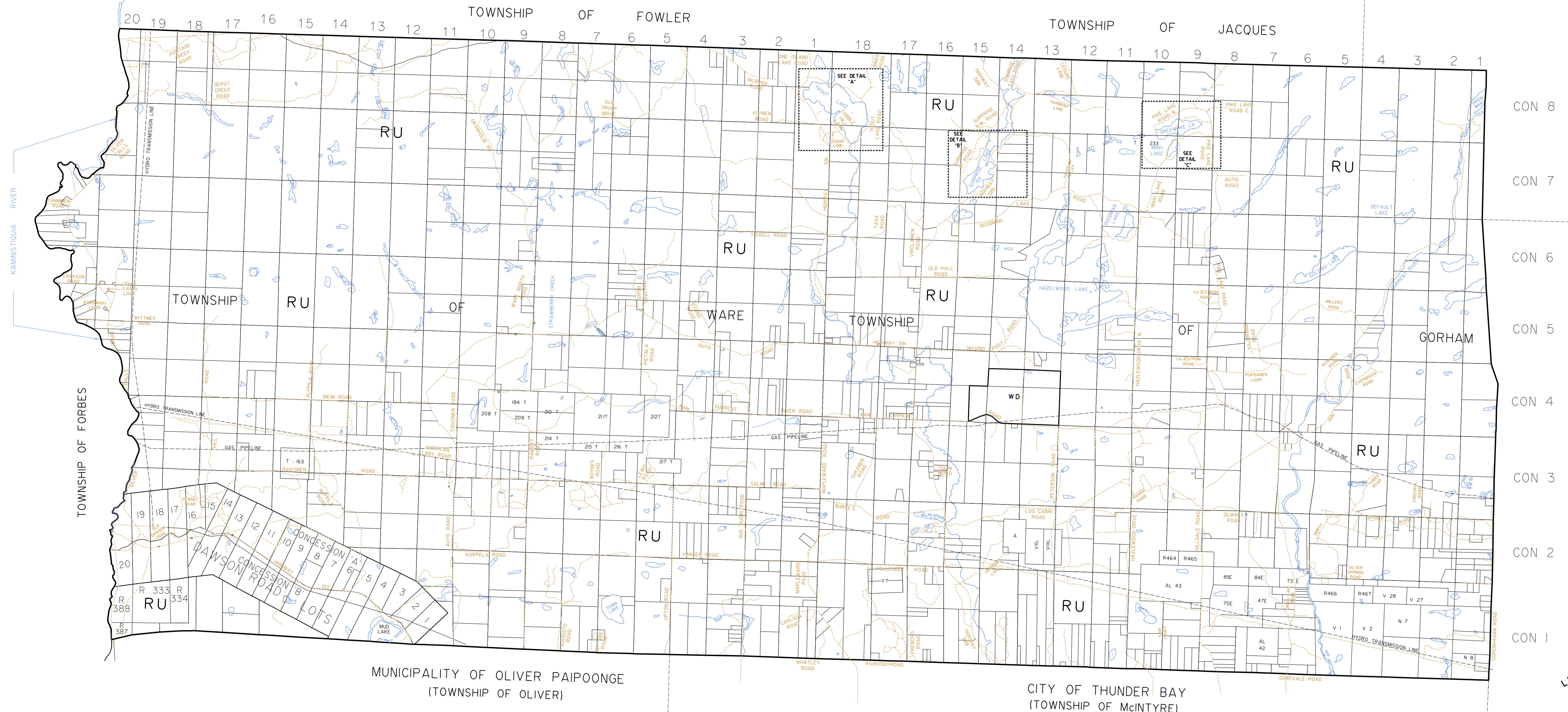


LAKEHEAD RURAL PLANNING BOARD
 TOWNSHIPS OF
 GORHAM, WARE,
 DAWSON ROAD LOTS
 LAND USE PLAN SCHEDULE "A-1"
 RURAL AREA
 DISTRICT OF THUNDER BAY



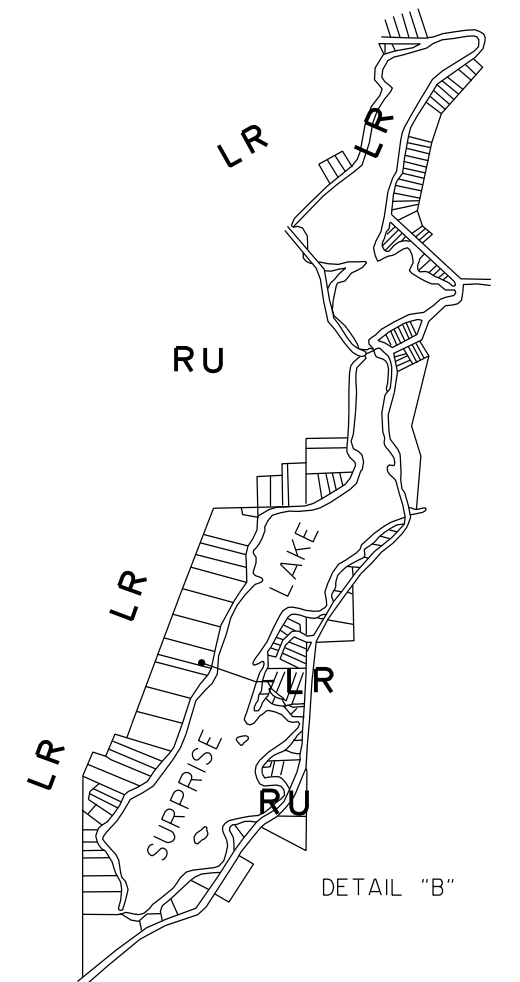
LEGEND
 RU RURAL
 LR LAKE RESIDENTIAL

WD WASTE DISPOSAL SITE
 TRAVELLED ROADS / HIGHWAYS
 LAKES / LOWLANDS / WATER COURSES



CON 8
 CON 7
 CON 6
 CON 5
 CON 4
 CON 3
 CON 2
 CON 1

MUNICIPALITY OF SHUNIAH
 (TOWNSHIP OF MACGREGOR)



MARCH 25, 2013

MANAHAN PLANNING CONSULTING
 304-101 SYNDICATE AVENUE, NORTH, THUNDER BAY, ON P7C 1Y4
 T: (807) 623-2823 F: (807) 623-2823

J.D. BARNES SURVEYING
 LIMITED MAPPING
 LAND INFORMATION SPECIALISTS GIS
 1001 WILLIAM STREET, SUITE 102A, THUNDER BAY, ON P7B 6M1
 T: (807) 623-6277 F: (807) 626-8040 www.jdbarnes.com

DRAWN BY: GN/NTN CHECKED BY: D.M. REFERENCE NO: 07-32-689-00
 FILE: G:\7326890\Amended Drawings_Mar 21, 2013\plan-689-00.dwg DATED: 25 MAR 2013